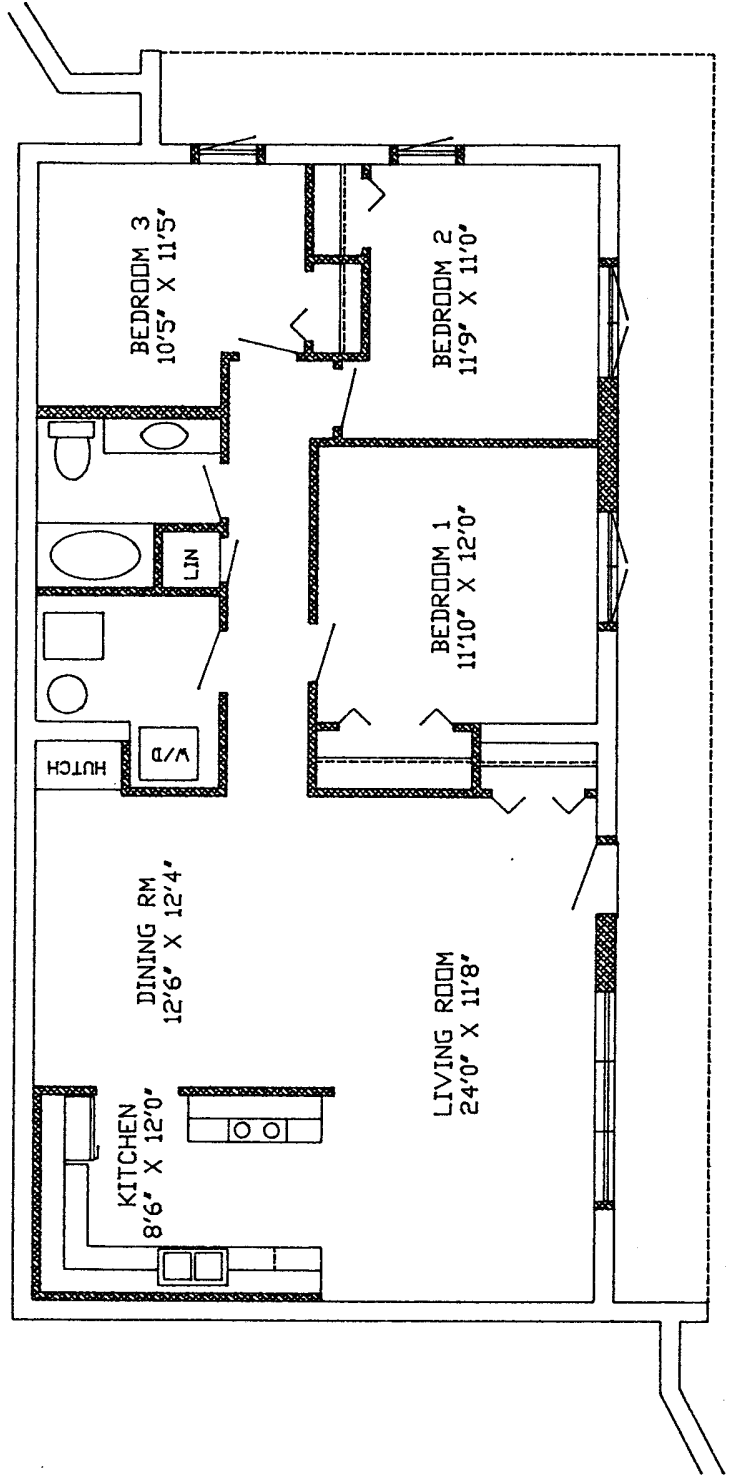
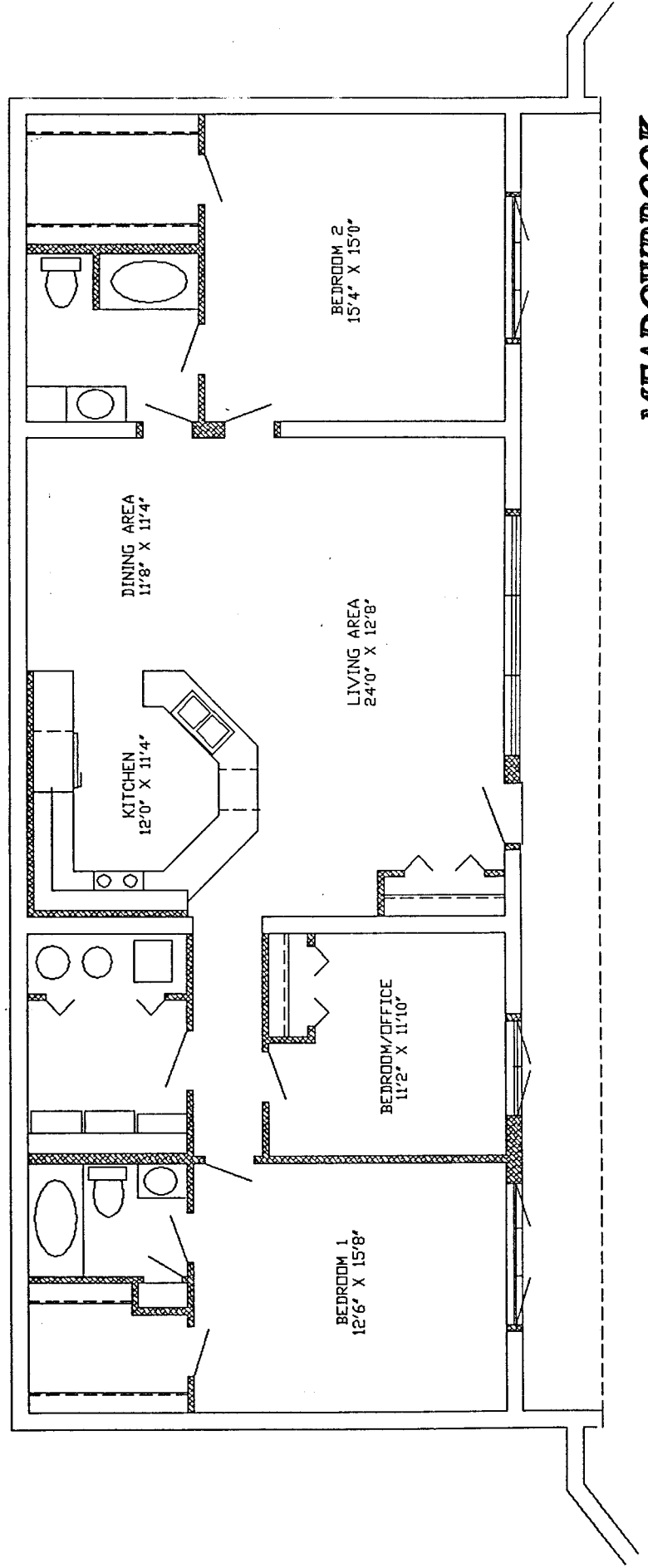
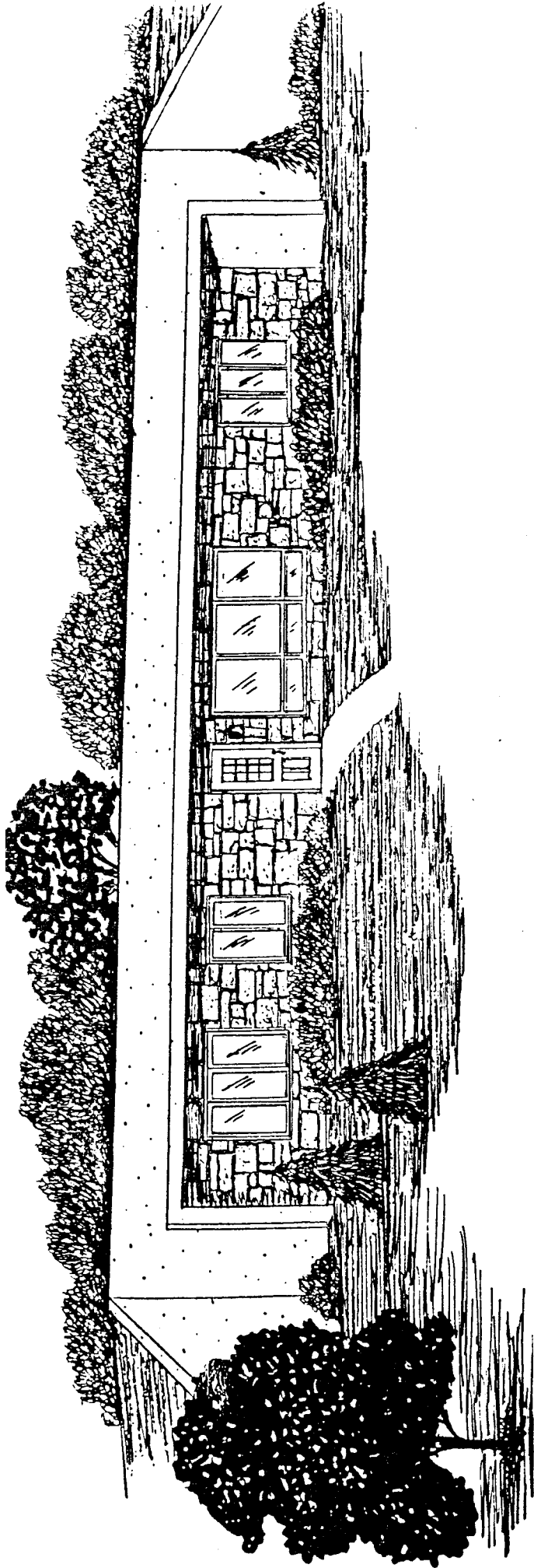
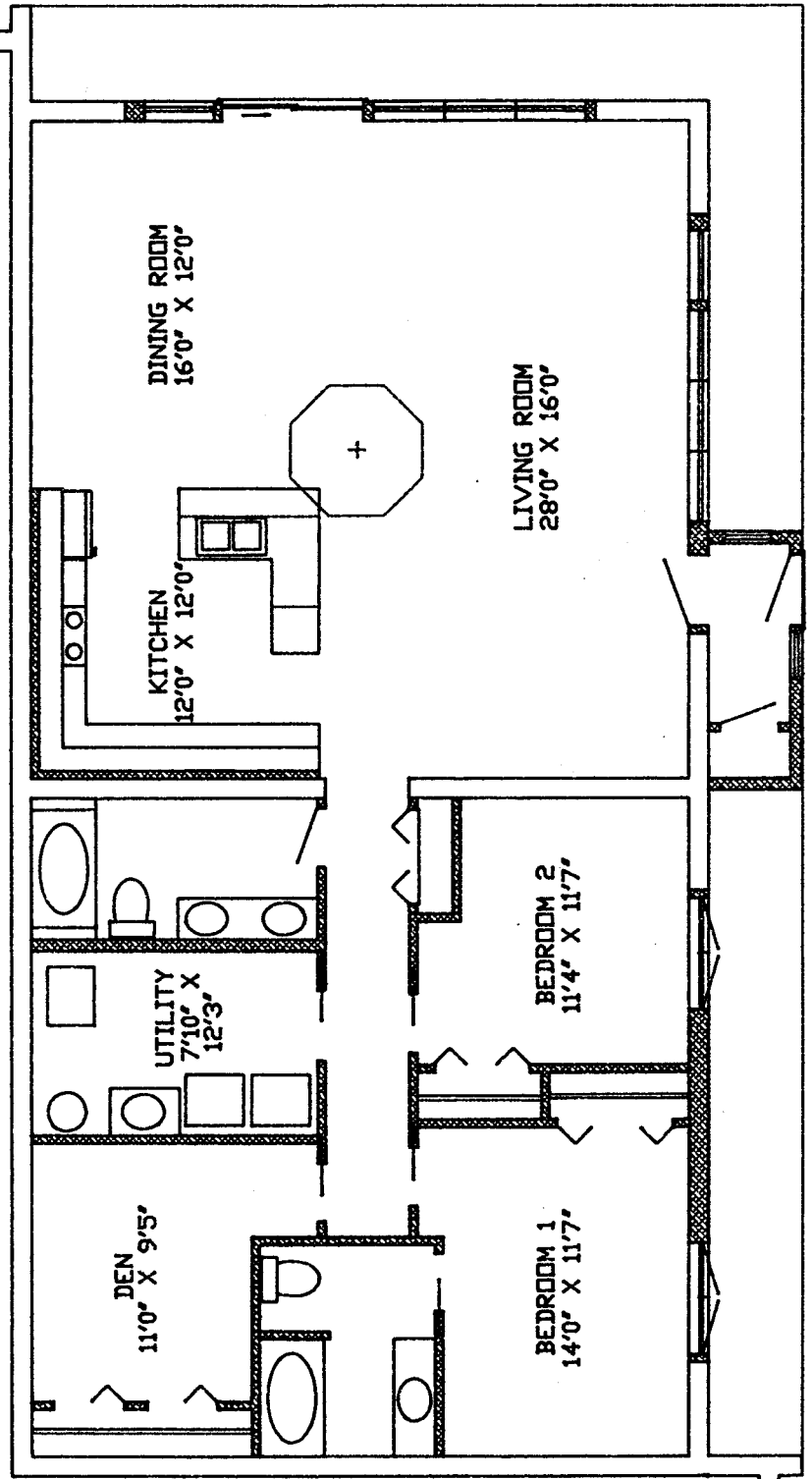
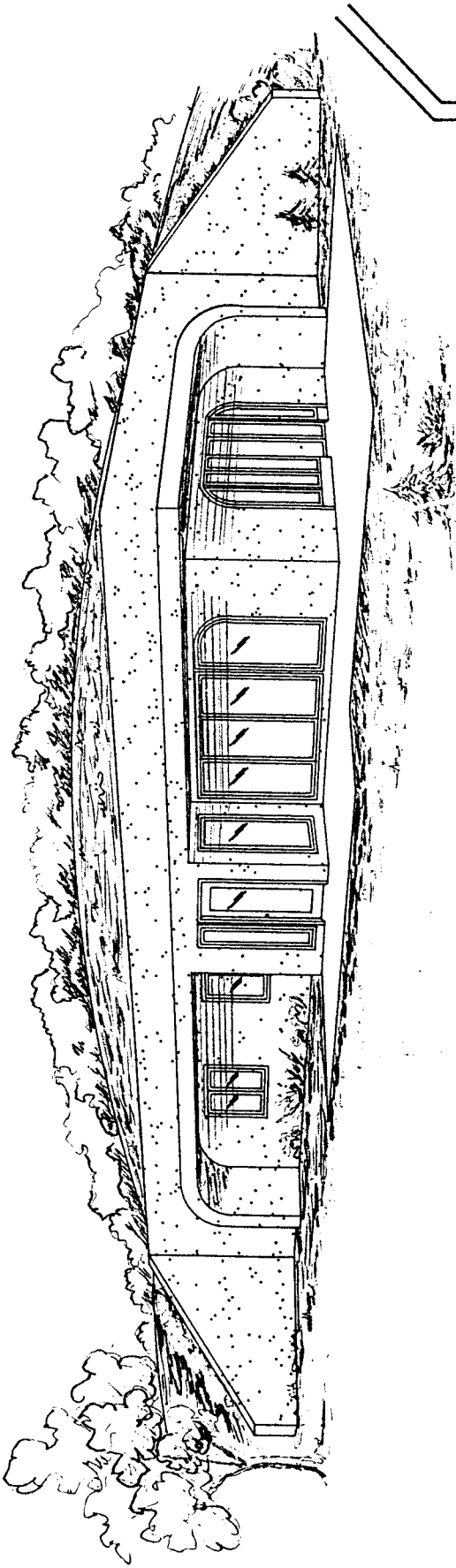


**EAGLE VIEW**

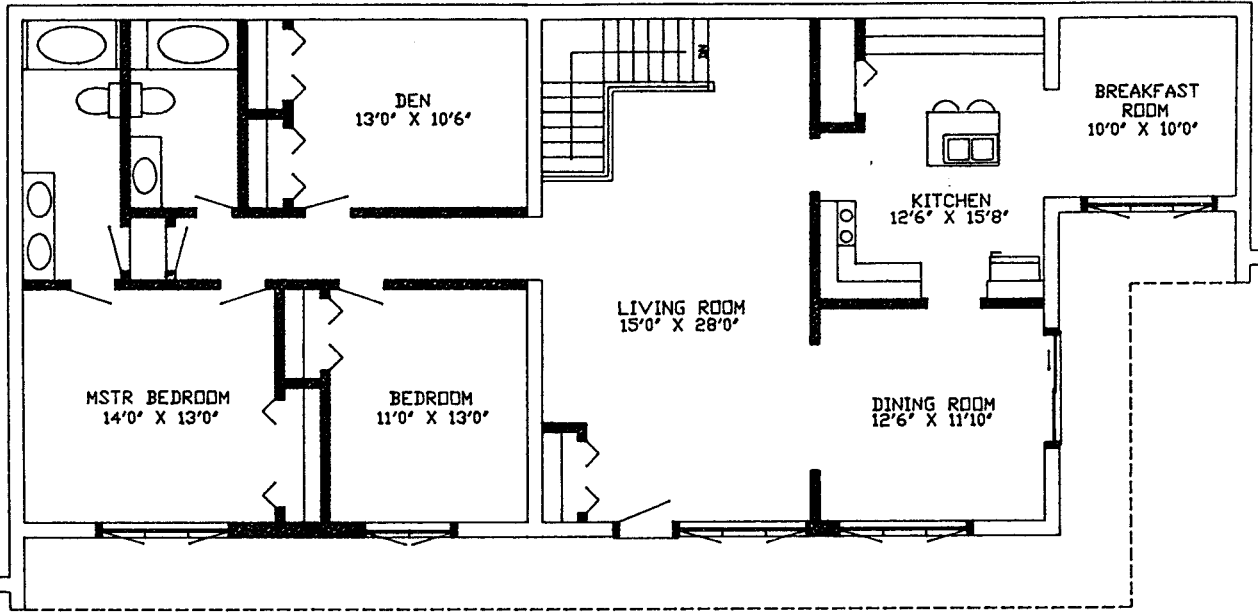
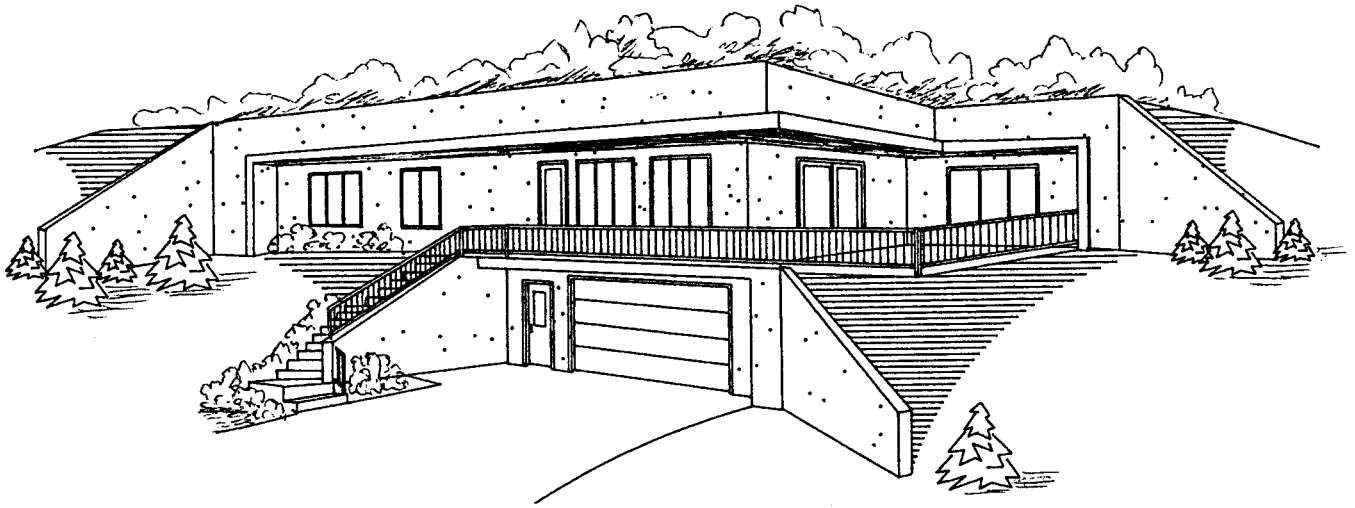




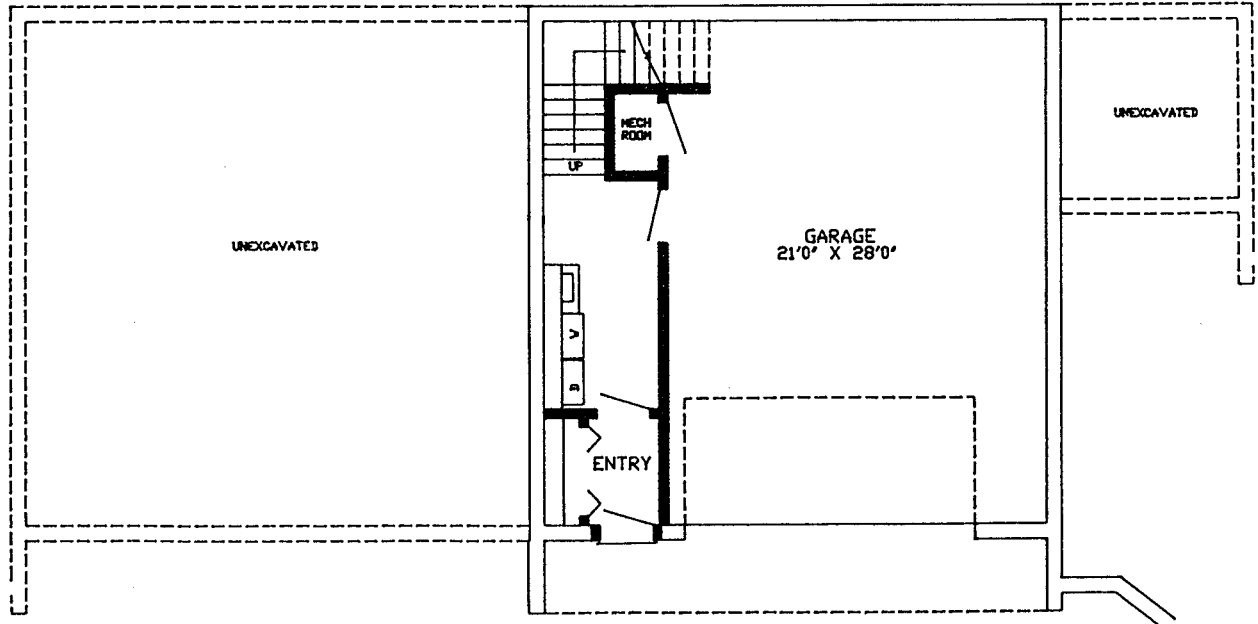
**MEADOWBROOK**



EASTPORT

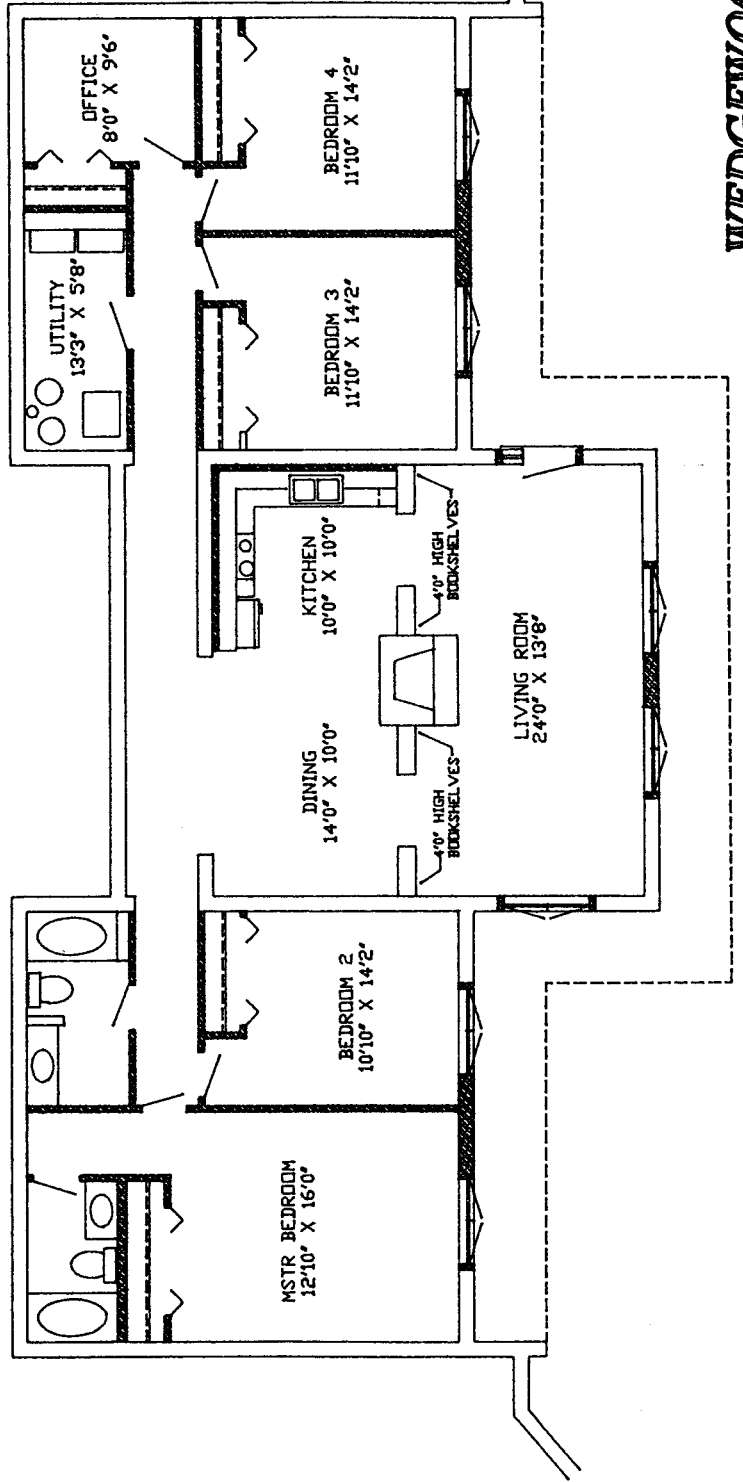
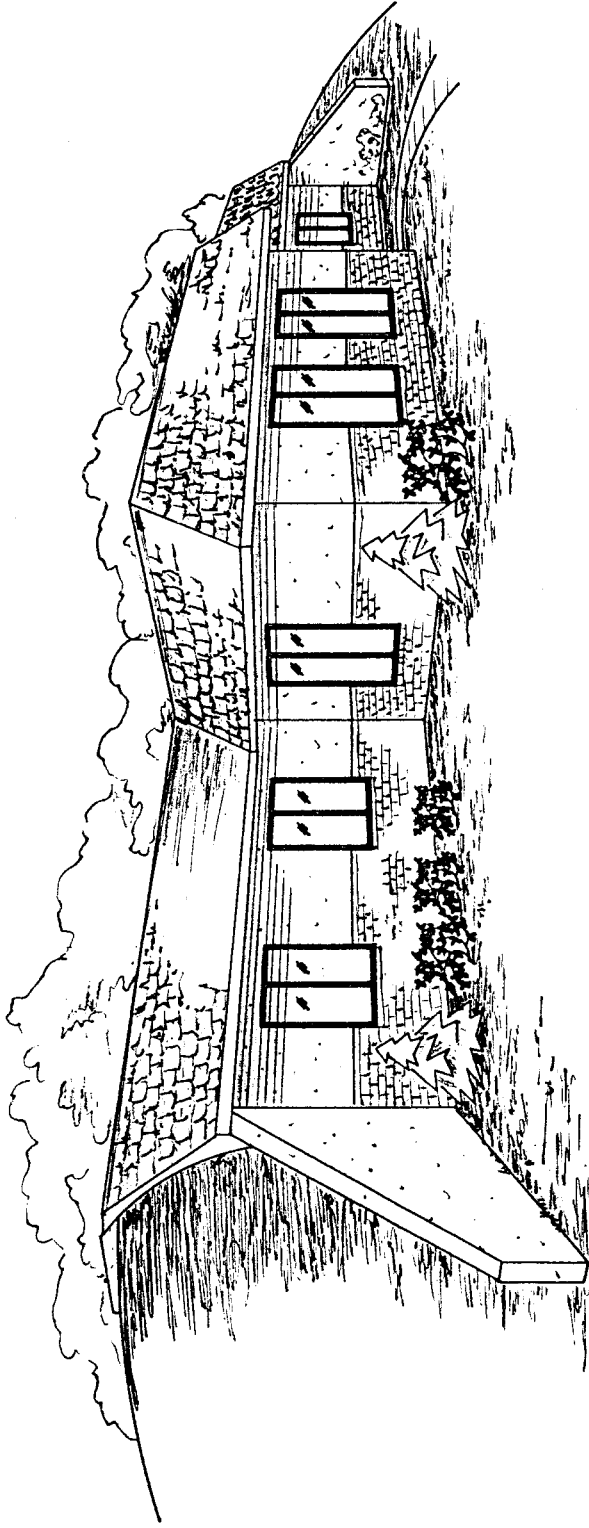


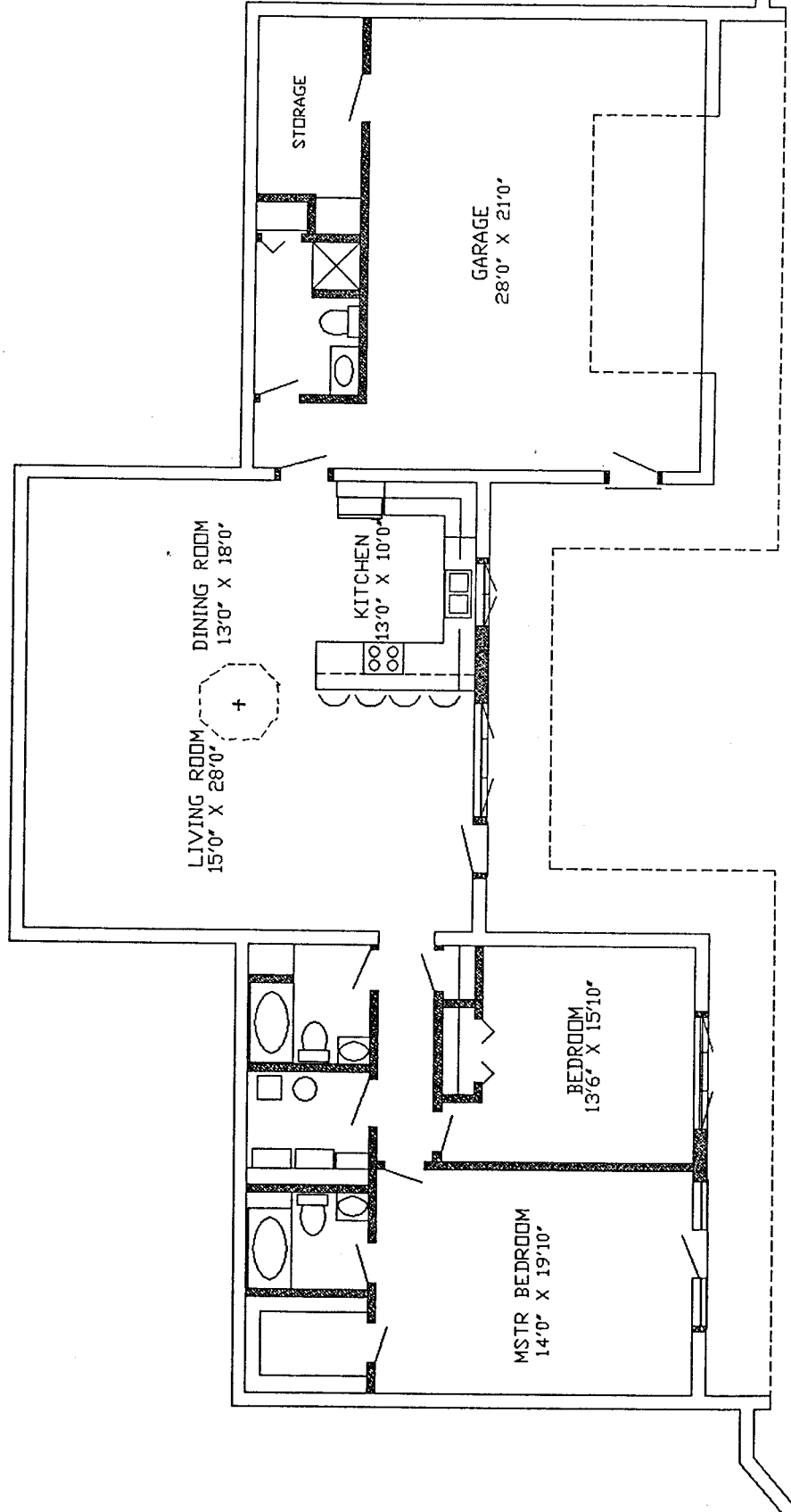
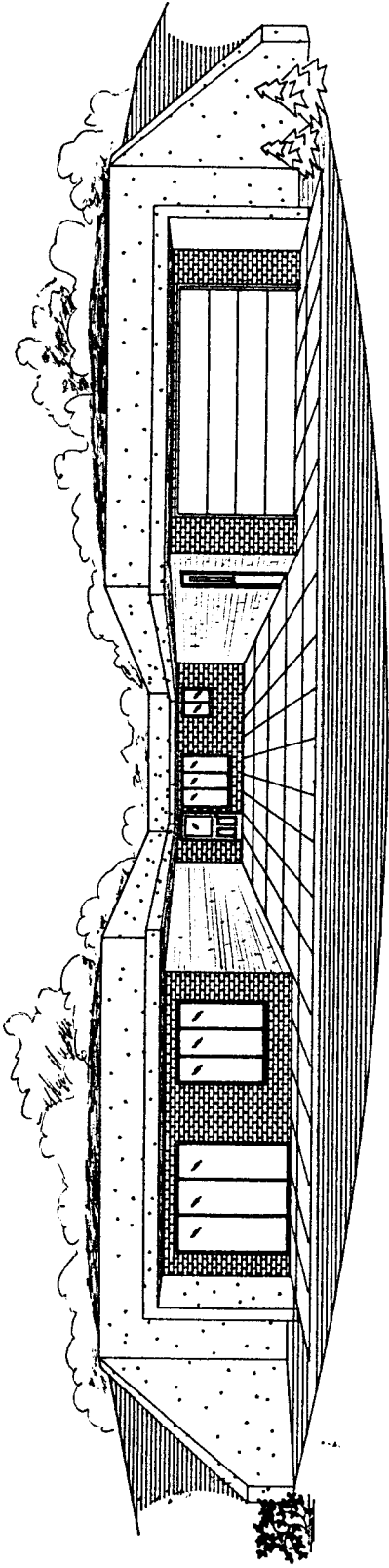
UPPER LEVEL FLOOR PLAN



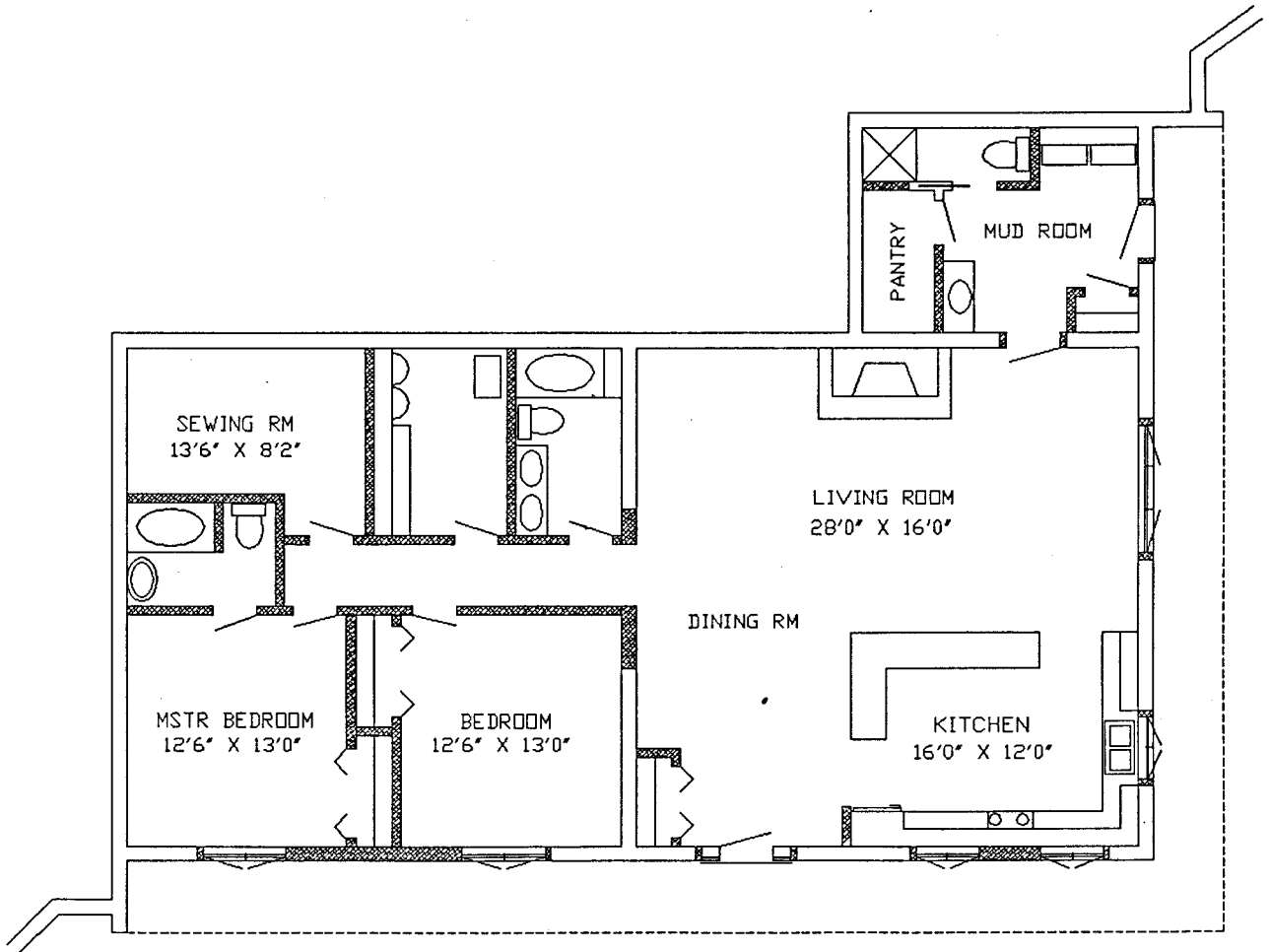
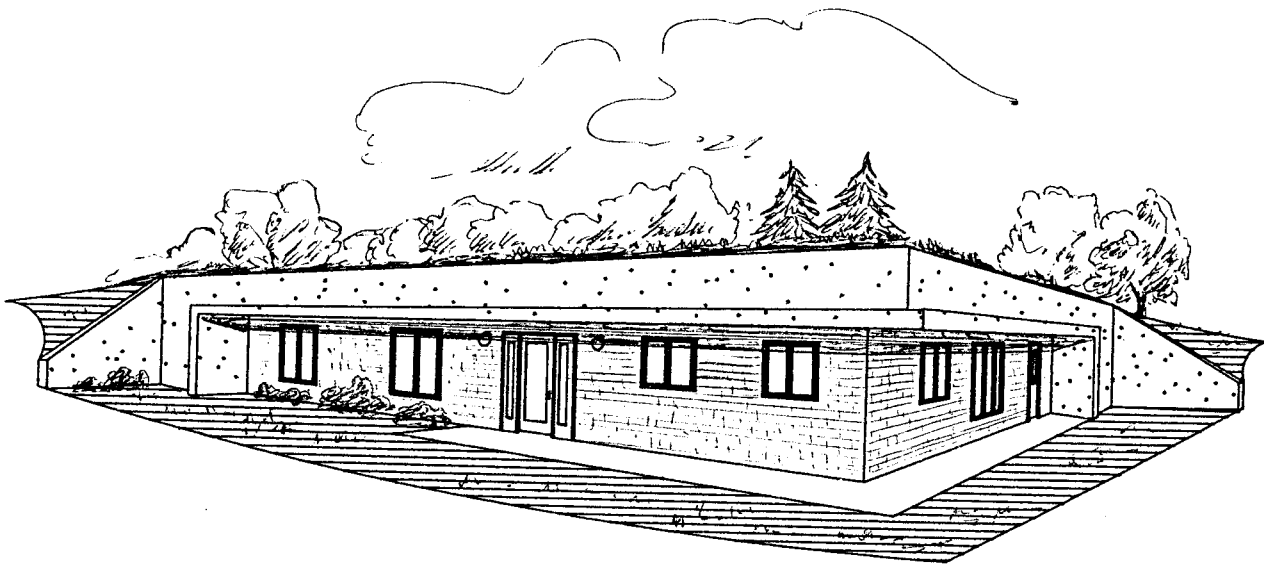
LOWER LEVEL FLOOR PLAN

**RIVERVIEW**

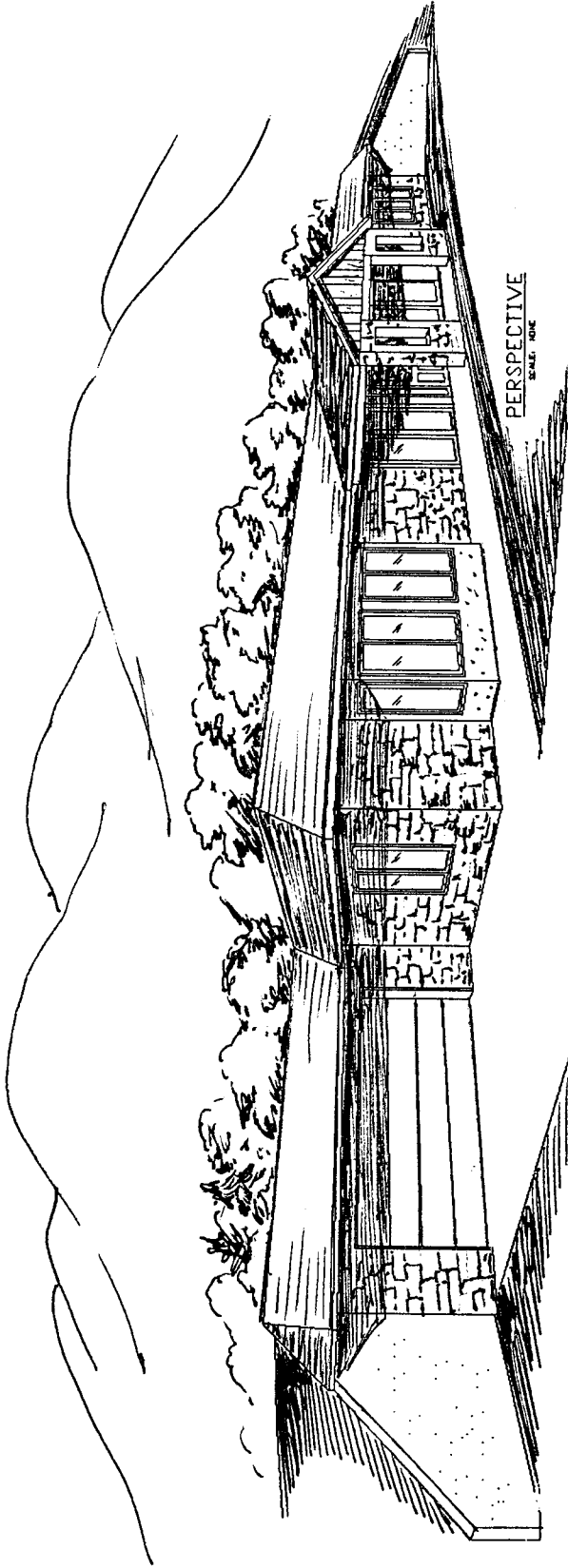




**THE EXECUTIVE**

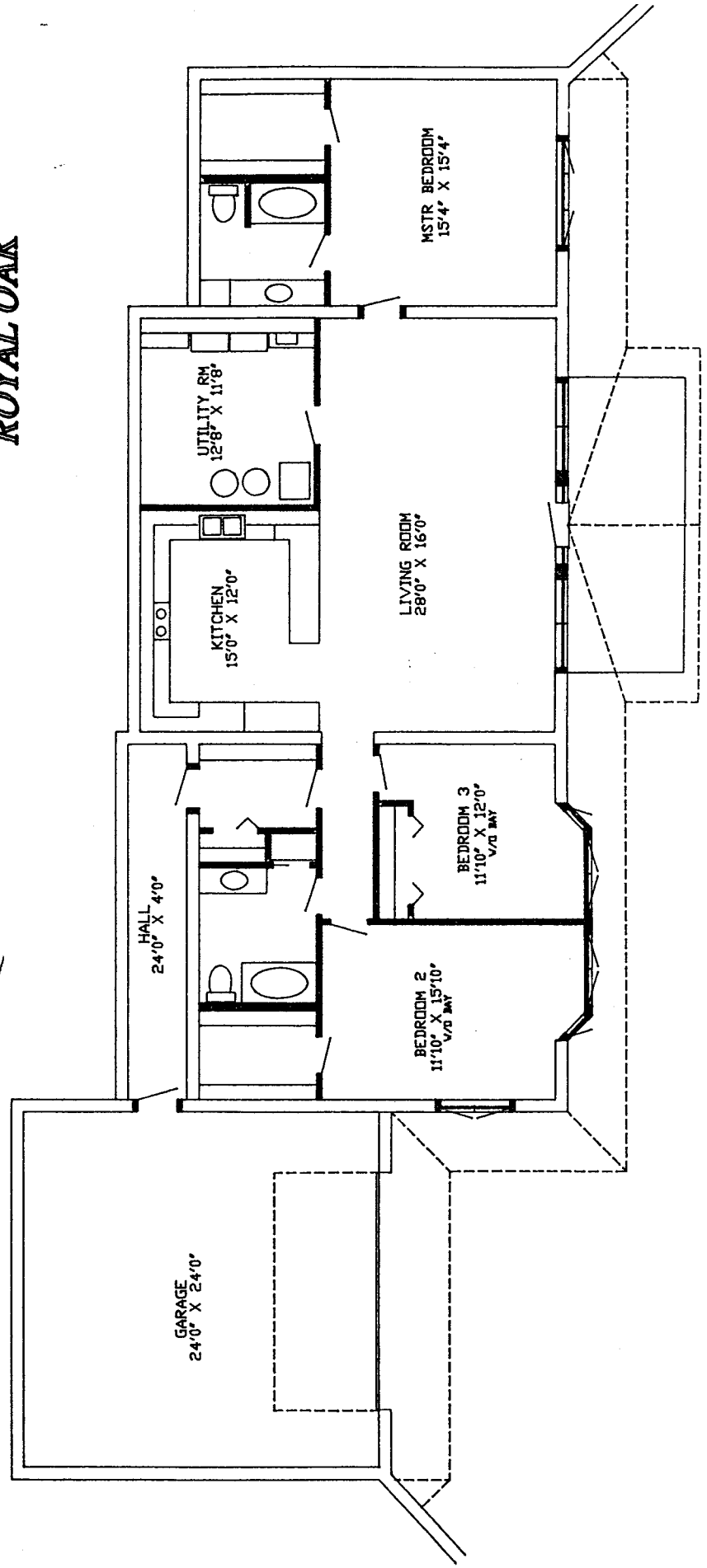


**EVERGREEN RIDGE**



PERSPECTIVE  
SCALE: NONE

# ROYAL OAK



GARAGE  
24'0" X 24'0"

HALL  
24'0" X 4'0"

KITCHEN  
15'0" X 12'0"

UTILITY RM  
12'8" X 11'8"

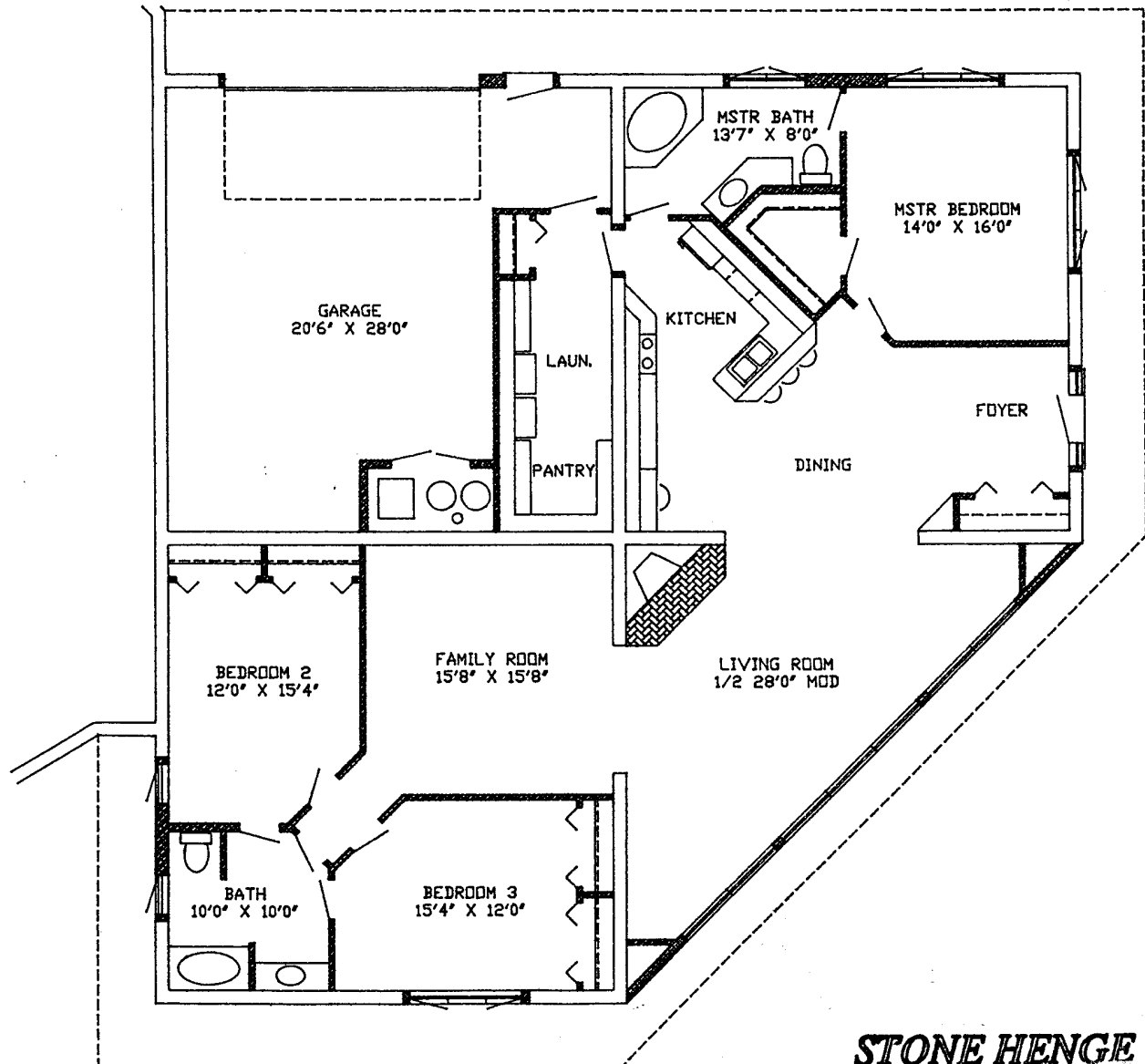
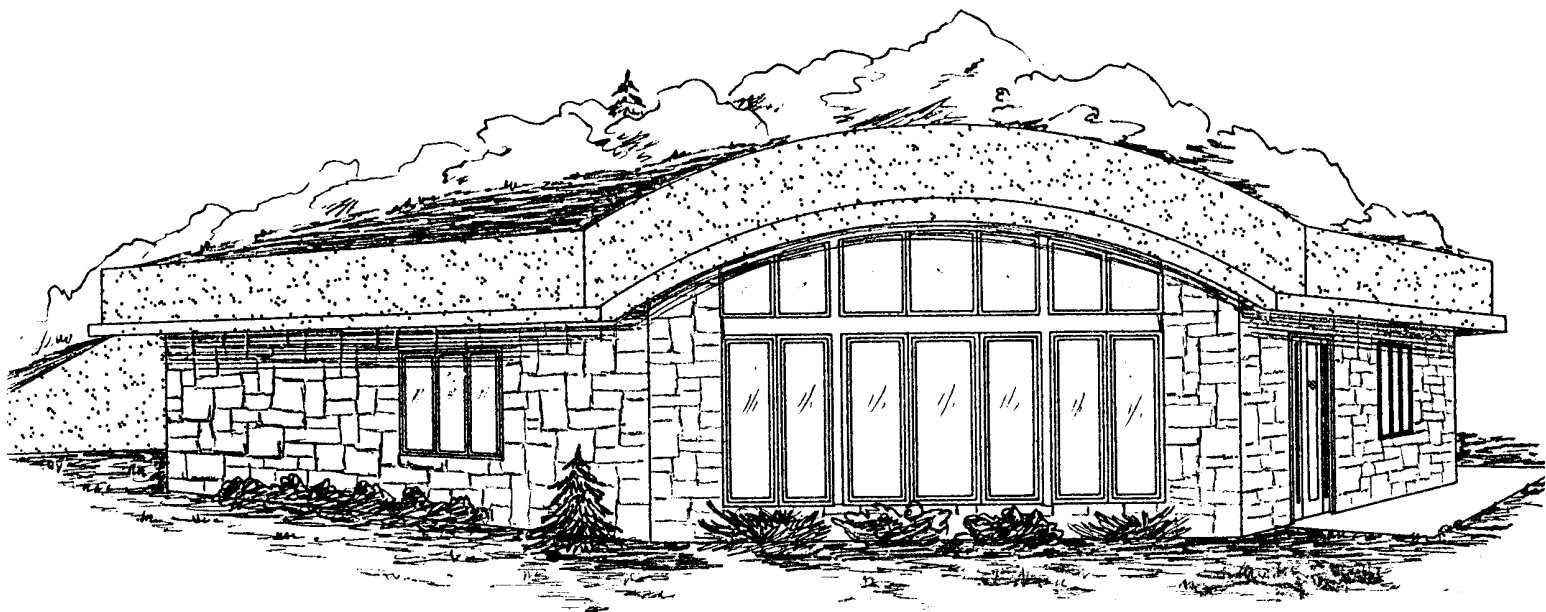
LIVING ROOM  
28'0" X 16'0"

BEDROOM 2  
11'10" X 15'10"  
V/O BAY

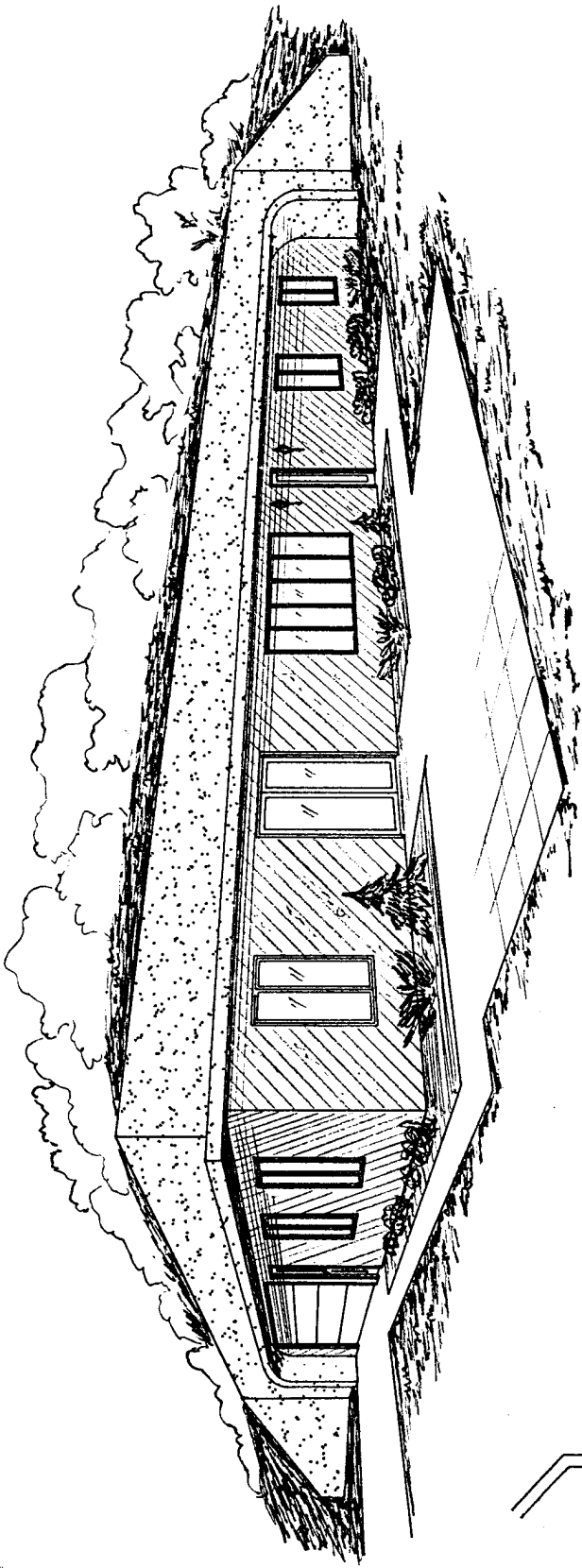
BEDROOM 3  
11'10" X 12'0"  
V/O BAY

MSTR. BEDROOM  
15'4" X 15'4"

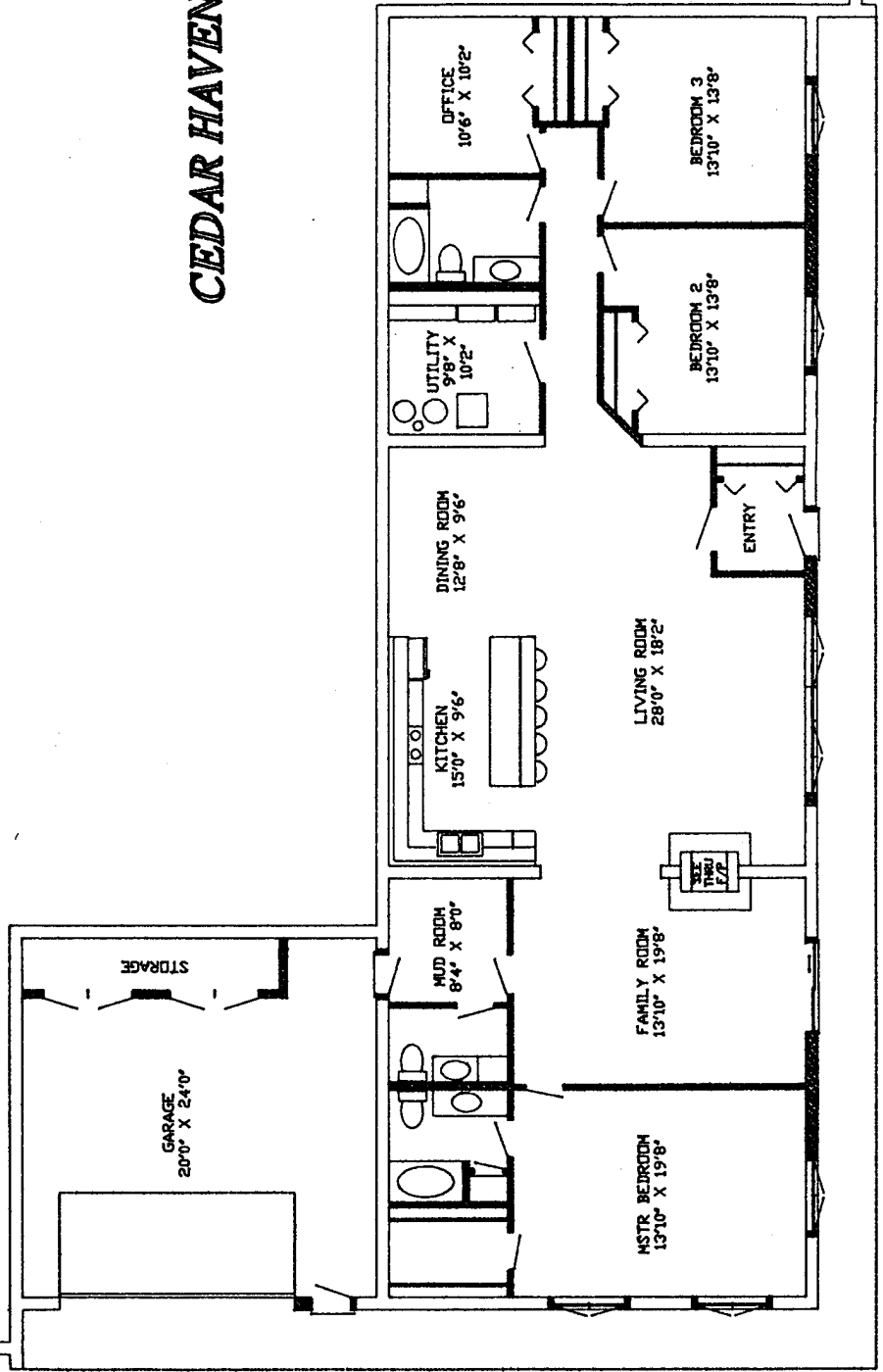


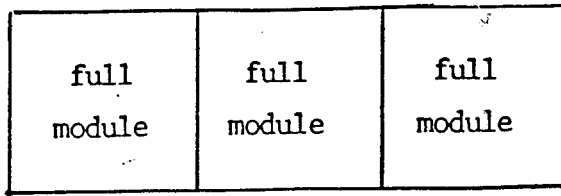
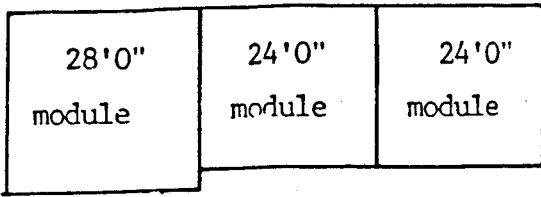


**STONE HENGE**

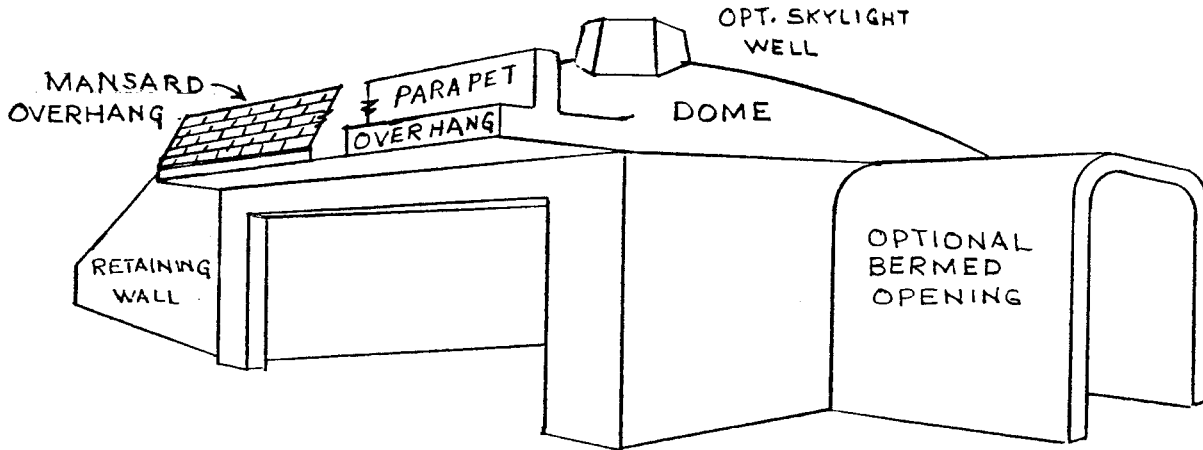
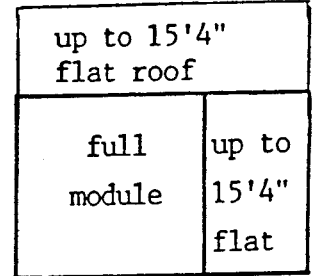
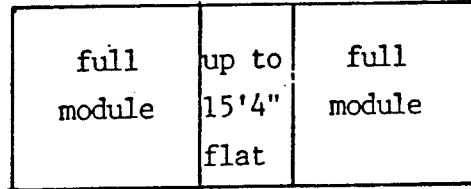
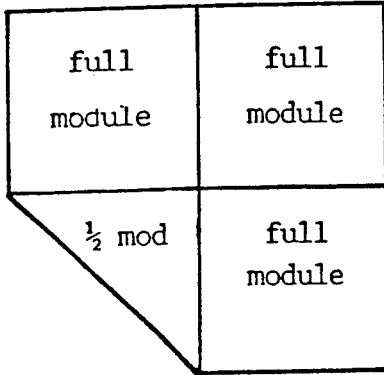
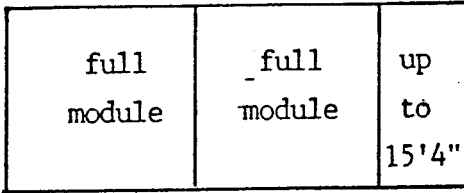
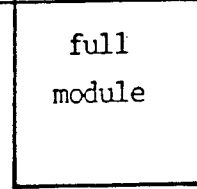
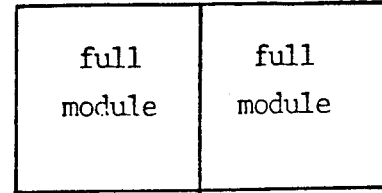
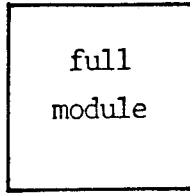
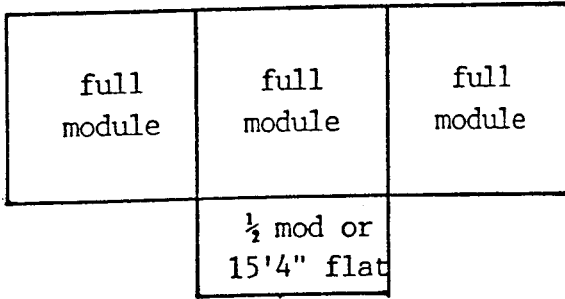
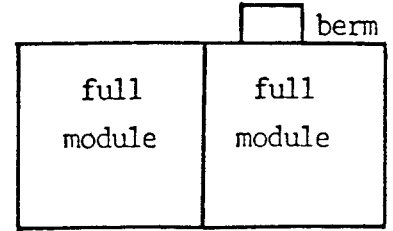
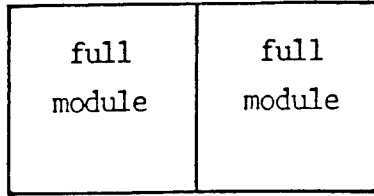
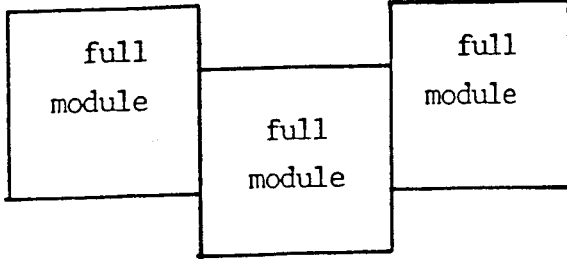


# CEDAR HAVEN



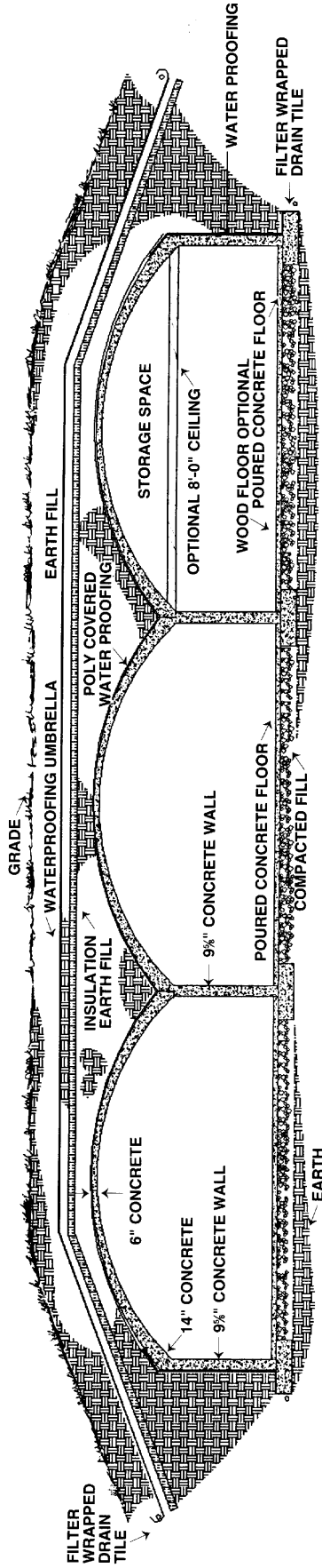


variations of home layouts—other variables are possible also.



TYPICAL MODULE WITH OPTIONS

## Dome Structure Cross Section



# 25 REASONS WHY YOU SHOULD CONSIDER EARTH SHELTERED LIVING

- ABUNDANT NATURAL LIGHT** — Your home will have more natural lighting than a conventional home. If you feel that all earth sheltered homes are dark, damp and dreary, you have a real surprise coming. Call us!
- AN EARTH SHELTERED HOME IS COMFORTABLE ALL YEAR ROUND** — Cool in summer, warm in winter.
- ENERGY EFFICIENCY** — Save up to 80% on heating and cooling.
- ECOLOGICALLY SOUND AND AESTHETICALLY PLEASING** — You'll love your earth sheltered home for its beauty and compatibility of living with nature — not on top of it.
- UNIQUE AND EXCITING** — You'll be boasting about your new lifestyle and you will get visits from friends that you forgot that you had.
- DRASTIC LOW LIFE CYCLE-COST** — Less than 1/4 that of a conventional home.
- LONG LASTING** — Constructed of concrete, earth sheltered homes will last well over 100 years with
- LITTLE OR NO MAINTENANCE** — This means less expense and more time for the family.
- USE OF CONVENTIONAL HEATING AND COOLING SYSTEMS IS PERFECTLY PRACTICAL** — But you will only need a system with approximately 1/4 of the output that a conventional home requires.
- PUT AWAY THAT DUST RAG!** Less dust is able to infiltrate and settle on furniture.
- GREAT FOR THOSE WHO SUFFER FROM HAY FEVER** — Pollen like dust is kept outside.
- WATER LINES NEVER FREEZE** — All are nested below the frost line.
- SOLAR HEATING** — Because the earth remains at a constant temperature in the 50-60's, your earth sheltered home can utilize passive solar, with no gadgets needed.
- INCREASED YARD SPACE** — Makes small lot larger. More room for lawn, gardens, and family fun.
- SUPERIOR VIEWS** — Earth sheltered homes pick the pleasant view, not the neighbor's yard.
- STORM PROOF** — An earth sheltered home keeps your family safe from hail, tornadoes, etc.
- TERMITE PROOF** — Say goodbye to insects and extermination bills.
- LEAK PROOF** — With our unique concept your earth sheltered home has a written warranty against leakage.
- RODENT RESISTANT** — Rodents quickly give up on trying to intrude in an earth sheltered home.
- EARTHQUAKE RESISTANT** — An earth sheltered home is structurally superior to conventional dwellings. As the earth moves, so does the earth sheltered home. Conventional homes crumble.
- DECAY RESISTANT** — Being constructed of reinforced concrete, there is nothing to decay.
- FIRE RESISTANT** — Reinforced concrete with earth cover offers the best fire resistance available. No need to worry about a forest fire or a neighbor's fire spreading.
- BURGLAR RESISTANT** — Earth sheltered homes have thrown a humdinger of a curve at our less scrupulous members of society ... their fewer points of entry have cooks scratching their heads.
- PROTECTION FROM NUCLEAR FALLOUT** — Earth and concrete are two of the most efficient radiation shields available to the general public.
- TECHNOLOGICALLY ADVANCED DESIGN** — With our air handling system such things as sweating walls, mildew growth, and stale air are eliminated, and any traces of radon are expelled with the air changes.

**EARTH SHELTERED TECHNOLOGY, INC.**

P.O. BOX 5142 MANKATO, MN 56001  
 PHONE: (507) 345-7203 TOLL FREE 1-800-345-7203 FAX (507) 345-8302